

NURTURING LITTLE
MINDS AND HEARTS



EAST VILLAGE

ELEPHANT CENTRAL

WANSTEAD GREEN

WANSTEAD VILLAGE

WELCOME TO Little Bear's Nursery

Little Bear's Nursery is a **leading London-based daycare group with over 19 years of experience**. We offer a safe and nurturing environment where children aged three months to 5 years can learn and grow at their own pace.

Founded in 2004 by Shona O'Neill, a teacher with 25+ years of Early Years experience, the launch of Little Bear's Nursery fulfilled her long-held passion to open a **high-quality nursery providing a safe, secure and nurturing environment** for children to develop and learn.

Our curriculum follows the **Early Years Foundation Stage (EYFS)** and promotes all areas of child development, including social, emotional, physical, and cognitive development. We use various teaching methods, including play-based learning, to engage children and help them learn.

We have a team of **experienced and qualified staff** passionate about early childhood education. Our staff are dedicated to providing each child with the individual attention and support they need to thrive.



It is a wonderful
journey to
embark upon!



*Brighter thinking
for early years



ALL-INCLUSIVE

Nursery Package

We understand the rush to leave for nursery and work each morning, so we make sure to take care of all your child's needs. Little Bear's offers a truly **all-inclusive service, providing the everyday essentials, all meals, and fruit snacks.**

Enrichment Activities

Football, yoga, music, and French classes are all included.

Baby Milk Formula

All baby milk formula and baby weaning food is included.

Nut-Free Nursery

Little Bear's Nursery is nut-free at all of our sites.

Freshly Cooked Food

We offer freshly cooked, seasonal, and nutritious meals in nut-free kitchens. All dietary needs are met.

Trips & Activities

Regular trips to the local area and any visiting events are also included in the Little Bear's package.

Nappies & Nappy Creams

At Little Bear's, we only use leading brand name products to ensure the best for your little one.

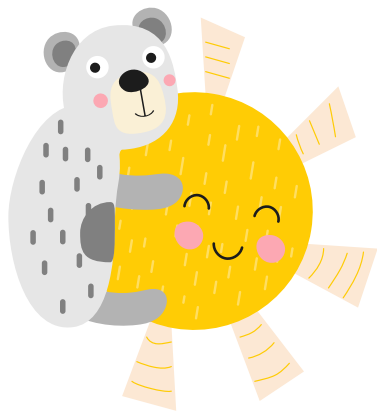


Scan to
Book a tour



OUR MISSION

A safe & nurturing environment



We are committed to providing a safe, nurturing, and stimulating environment where children can learn and grow. **We strive to create a community where children feel safe to explore, take risks, and learn at their own pace.** We believe that all children are unique and deserve to be treated with respect.

At Little Bear's, we view learning as a journey which involves acquiring new skills and knowledge in a caring, enriched and multi-sensory environment where everyone's views matter. We see children as individuals with their own needs and interests, which enables us to tailor their learning experiences to best effect.

OUR PHILOSOPHY

Learn through play

Little Bear's Nursery aims to **prepare your little ones for the next stage in their learning journey** by equipping them with the skills and confidence they need to succeed in formal education and life.

We focus on both academic progress and social-emotional development, helping children to articulate their thoughts, feelings, and views in a safe and supportive environment.



EARLY YEARS FOUNDATION STAGE

Our Curriculum



Our curriculum is child-centred, which means that it is tailored to each child's individual needs and interests. We follow the **Early Years Foundation Stage (EYFS)** curriculum, England's national early education and childcare framework.

The EYFS curriculum is play-based, meaning **children learn through active exploration and discovery.**

Little Bear's Nursery uses a variety of teaching methods to deliver the EYFS curriculum, including:



 **Circle time**

 **Small group activities**

 **Free play**

 **Outdoor learning**

 **Field trips**

 **Parent workshops**



We wanted a nursery place where it would feel like home for our daughter, and Little Bear's was the place! All the staff were so warm and welcoming on our first visit. She also had a great time during her settling-in period. We couldn't be happier with our choice!

★★★★★

- J B (Mother of Child)



THE KEY TO A BRIGHT FUTURE

Parent Partnership

We value parent communication highly and believe it is essential for the children's well-being and development. We recognise the importance of this relationship in ensuring that your child thrives, both emotionally and academically, whilst at nursery.

We aim to work together towards the common goal of providing your child with the best possible care.

To ensure you are updated with all developments, we aim for daily dialogue with your child's key worker, send newsletters, and provide a tracker outlining their achievements using our nursery software.



ParentZone App

Using ParentZone, we provide daily updates on your child's progress and achievements. This may include information regarding their care and well-being, including food consumed, sleep times and nappy changes.

Photobox App

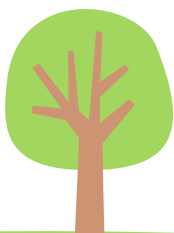
Parents can view their child's Learning Journey anytime, including photos and observations. You can also use the Photobox app to create a memory box of your child's achievements.

Face-to-face Meetings

We hold regular and timetabled Parents' Evenings, where parents can chat with their child's key worker to review development and plan their child's next steps together jointly.

Parent Workshops

We provide extra support to our parents by offering Parental Workshops. Our workshops cover different topics each month and can provide parents with invaluable skills and help parents learn about child development and behaviour.



A GENTLE START Settling In



At our nursery, we offer a phased settling-in program that begins with short visits and gradually increases in length as your child becomes more comfortable. This allows your child to get to know their new surroundings and caregivers at their own pace.



Our Settling In Process consists of 6 sessions. We will book your child's first settling-in session. The room leader/key person will book the remaining five sessions. Learn more about our Settling In Process [here](#).

We also support parents of children transitioning to the Reception Year at primary school. Schools typically have staggered start and finish times in the early days, and wraparound care can be a great way to support the logistical and continuity challenges during this period.

We are here to help you and your child make a smooth transition. Please **contact us** to learn more about our settling-in program.

Scan to learn about our
Daily Routine



My son loves the nursery and has learned so much in so little time! As a mother, I am grateful for the app that gives us a glimpse of what our boy is doing during the day, and it's very reassuring. The staff has been great, patient, and professional; they love what they do! I was pleased with the location, the setting of the nursery, and how clean it is and safe! After visiting some nurseries in the new area, I can attest that Little Bear's is a 10!

★★★★★
- S I (Mother of Child)



WHERE CHILDREN THRIVE

Our facilities



Our settings feature bright, airy, age-specific, themed rooms in compliance with the National EYFS Curriculum and directives. **Each Base Room is furnished with the highest quality Community Playthings furniture, fittings and toys.** Within each Base Room are curriculum-based areas, each corresponding to the EYFS seven areas of learning, a place for sleep and quiet time, and plenty of space to play.



Research has shown that children learn best and acquire new skills through carefully thought-out and structured play, enabling them to test out hypotheses and formulate new ones. Therefore, **Little Bear's rooms have age-appropriate toys and activities to encourage experimentation, learning and development.**

Each setting benefits from outside space. Shaded gardens, turfed with AstroTurf and protected to a fall height of 1.5 meters, give your little bear cub room to play and explore outdoors in a safe and stimulating environment.



Our daughter started at this nursery in the baby room and moved through to preschool. It was a safe and nurturing environment, and we never felt we needed to worry. I am thankful we managed to find this nursery and that our kid has spent the first few years of her life growing and learning here. There is an excellent range of activities with a large outdoor space and lots of outdoor equipment.

★★★★★

- D P (Mother of Child)



KEY TO QUALITY CHILDCARE

Our Staff



Our fantastic team is the heart of Little Bear's Nursery. They are genuinely passionate about childcare and committed to providing the highest standard of care and education. **They go above and beyond to ensure every child feels welcome, safe, happy, and engaged in learning.**

As set out in the safeguarding and welfare requirements of the Early Years Foundation Stage (EYFS), we have a duty of care to ensure any adults caring for the children are suitable to do so and that staffing arrangements ensure the children are well supervised, kept safe and have their needs met.

HEALTHY EATING, HAPPY CHILDREN

Nutrition



At Little Bear's Nursery, we understand that a nutritious and balanced diet is essential for children's early development. That's why we offer varied and nutritious menus developed by a nutritionist to meet the recommended nutrient targets for preschool children, including salt and NME sugars.

We also accommodate special dietary needs, such as allergies and intolerances. We make sure that every meal is delicious and appealing. We also offer a variety of fresh fruit snacks throughout the day, with drinking water readily available.

Photography, Ella Miller. Food and Props Styling, Christina Mackenzie.



SUPPORTING FAMILIES

Funding & Support

Little Bear's offers 15 & 30 hours of Free Childcare for those eligible. Please ensure you have received your Eligibility Code from the Local Authority before notifying the nursery of your entitlement to Extended Funding.

For information on funding and tax-free childcare, please visit <https://www.childcarechoices.gov.uk/>



Little Bear's Bursary

We provide totally free childcare places for a number of qualifying families for their children, aged between 2 and 4 years, subject to availability and eligibility to access the Government's Free Childcare programs.

We deliver this by providing our all-inclusive¹, full-day childcare², free of charge for one day each week. If you are a family entitled to Extended Funding, you can attend for two full days each week on the same all-inclusive basis.

1. Our all-inclusive package provides all meals, snacks, drinks and nappies. 2. Attend nursery from the time we open until the time we close.

Scan to learn
more about our
**Fees &
Funding**



Stretched Funding

At Little Bear's, we offer Stretched Funding, which allows the 38-week academic year's fund for both 15 hours and 30 hours of Free Childcare to be spread equally over 52 weeks, giving 11 hours (Universal Entitlement) and 22 hours (Extended Funding), per week.

If you are a family entitled to Extended Funding but only attend for two days each week, you will only be entitled to claim 20 hours of funding, as the Government has a maximum daily funding period of 10 hours. Once you give the nursery your Eligibility Code, funding will automatically apply to your invoice.





Book a tour with us today to learn more about Little Bear's Nursery, view our wonderful facilities, meet our lovely team, and discuss your requirements.

EAST VILLAGE

30 Cheering Lane, East Village,
London E20 1BD
T. 020 8534 7701

WANSTEAD GREEN

1 & 3 The Green, Wanstead,
London E11 2NT
T. 020 8532 9562

ELEPHANT CENTRAL

7 Castle Square, Elephant and Castle,
London SE17 1EN
T. 020 7358 7860

WANSTED VILLAGE

14 Seagry Road, Wanstead,
London E11 2NG
T. 020 8530 7541

CONTACT US

hello@LittleBearsNursery.co.uk
T. 020 3947 5757





LittleBearsNursery.co.uk